

THE IRIS SOCIETY OF AUSTIN

in cooperation with

THE AMERICAN IRIS SOCIETY

presents

Celebrating Zilker Botanical Garden

Saturday, April 13, 2024

open to the public 1:00 pm to 4:00 pm



Austin Area Garden Center
at Zilker Botanical Garden
2220 Barton Springs Road
Austin Texas 78746

*Admission to American Iris Society approved shows
is always open to the public at no charge.*

The Iris Society of Austin is an affiliate of the American Iris Society. This local group promotes the growing and exhibition of irises. A newsletter is published containing timely hints and newsworthy information pertaining to the Iris.

The Iris Society of Austin usually meets the third Sunday of January, February, March, April, May, September, October and November at the Austin Area Garden Center, inside Zilker Botanical Garden, 2220 Barton Springs Rd, at 1:00 pm. For more information, ask any member or fill out a membership form found as you enter the show auditorium. Local membership dues are \$18 per year, payable at the show or at any meeting. The membership year starts January 1 and ends December 31.

The American Iris Society (www.irises.org) is an international organization devoted to the promotion of the Iris. Anyone interested in this organization is invited to join today at this event (single, annual dues \$30), online at <https://www.irises.org/aismembers/ais-membership/> or by contacting the AIS Membership Secretary:

Jean Richter
1226 High Street
Alameda CA 94501

This show schedule has been submitted to and approved by:

Olga Batalov
Exhibition Chair
American Iris Society

IRIS SOCIETY OF AUSTIN

CURRENT OFFICERS 2023-2024

President Ellen Singleton
1st Vice President (Programs) Nelda Moore
2nd Vice President (Membership) Jaime Hadley
Secretary Dara Smith
Treasurer Tracey Rogers
Newsletter Editors Nelda Moore, Ken Fuchs

EVENT SCHEDULE

Entries received 8:00 - 9:45am
Judging10:15am - Noon
Open to public 1:00pm - 4:00pm
All exhibits removed.....4:00pm - 5:00pm

2024 IRIS SHOW COMMITTEE

Show Chair	Ellen Singleton
Schedule Coordinator.....	Tracey Rogers
Judge Coordinator	Tracey Rogers
Clerk Coordinator.....	Donna Little
Placement Coordinators	Jaime Hadley/Marney Able
Secretary/Classification	Dara E. Smith
Awards	Jaime Hadley
Artistic Design	Tracey Rogers
Photography	Audrey Baker
Hospitality.....	_____
Publicity	Shirley Smith
Clean-Up	All Members

IRIS SHOW GENERAL RULES

1. The Iris Society of Austin presents their 31st accredited iris show on Saturday, April 13, 2024, in the Auditorium of the Austin Area Garden Center in Zilker Botanical Garden, Austin, Texas. This accredited show is being held and judged under the rules and regulations of The American Iris Society as set forth in the Handbook for Judges and Show Officials, Edition *8.22 July 2022*, which cannot be violated.
2. Judging will be in accordance with the rules and regulations set forth by the American Iris Society. Different accredited or expert judges may judge each of the different divisions. All judges' decisions will be final, and any award may be withheld at their discretion.
3. Show judges or any immediate family members of the judges are not permitted to exhibit in the show.
4. Youth exhibitors (persons under 19 years of age) may enter exhibits in the Youth Horticulture Division OR the Adult Horticulture Division but not both.
5. The Classification Committee may divide, combine or create sections/classes as necessary.
6. The Show Committee will exercise all possible care but is not responsible for loss or damage to exhibits.
7. Only authorized persons will be allowed in the show area during judging.

DIVISION I — HORTICULTURE RULES

1. This is a Variety/Cultivar Show, staged according to type and in alphabetical order within the various sections and groups. Each variety/cultivar constitutes a separate class and must be correctly named.
2. Division and Section identifiers and name of variety must appear on every entry card. The entry card is to be prepared by the exhibitor
3. The horticulture entries are open to any grower.

4. Entries must have been grown and entered in person by the exhibitor whose name appears on the entry tag. Members of a family may exhibit from the same garden as a single exhibitor or as separate exhibitors (but not both, in the same show) provided they both work in the garden
5. Each exhibitor may enter as many varieties as desired, but may not enter more than one specimen of each variety in single stalk, single blossom or potted irises (except in collections or English Box sections).
6. Unnamed stalks or labeled irises grown by another person are not eligible to be entered in any section of the Horticulture division, but may be displayed on the table marked "For Display Only."
7. The Iris Society of Austin will furnish containers for all single stalk specimens as well as containers for collections. Any other containers (including single blossom) required must be furnished by the exhibitors.
8. Black foam will be furnished by the Show Committee for bracing stalks at the necks of containers. Any other materials such as Styrofoam, cut stalks, folded leaves or plastic wrap may be used by exhibitors.
9. Single specimens should be placed by the Placement Committee. Exhibitors will be allowed to place collections.
10. An English Box may contain either 3 or 6 individual blooms. Flowers may be all the same or different varieties. Each bloom must be correctly named and labeled. Exhibitor shall furnish the English Box in a size and shape appropriate to the number and size of blooms displayed. The English Box should have an outside non-reflective surface in a neutral color.

Reservations are required for the English Box section
Please contact Tracey Rogers at 512-789-2015 by April 6.

11. Within the single stalk, single blossom and potted iris sections, exhibitors have a choice on where to enter cultivars when a cultivar may fall into more than one section or group, e.g Flushed Delight falls under TB, SA and Historic. Flushed Delight can only be entered in one section by the exhibitor. If two or more exhibitors enter such a cultivar in different sections or groups, each is judged in the section or group where it is entered.

SECTIONS

- A Tall Bearded (TB)
- B Space Age TB
- C Other Novelty TB
- D Historic (*introduced before 1994*)
- E Border Bearded (BB)
- F Intermediate Bearded (IB)
- G Miniature Tall Bearded (MTB)
- H Standard Dwarf Bearded (SDB)
- I Miniature Dwarf Bearded (MDB)
- J Aril Iris & Arilbred (AR & AB)
- K Spuria (SPU)
- L Species & Species Crosses (SPEC & SPX)
- M Bulbous**
- N Louisiana (LA)
- O Japanese (JI)
- P Other
- Q Collection (*3 stalks, same variety or different*)**
- R English Box** (see #10 above)
 - Group 1- 3 blooms
 - Group 2-6 blooms
- S Potted Iris**
- T Single Blossom **

*** Entries not eligible for Best Specimen of Show*

AWARDS

- 1. Ribbons** – One first place ribbon (blue), one second place (red), and one third place (white) may be awarded within each class (variety) in any given section. As many honorable mention ribbons (pink) as quality merits may be awarded.
- 2. Best of Section** – An AIS Rosette may be awarded to the best entry in any Section with at least 3 exhibitors and 5 cultivars.

3. **Best of Texas** – An AIS Rosette may be awarded to the best specimen hybridized in Texas.
4. **Best of Color** – An AIS Rosette may be awarded to the best specimen in each color category. Color categories are listed below, and color classification will be decided by the judges.

Black	Gray	Red		Amoena	Multi-color
Blue	Orange	Violet		Bi-color	Plicata
Brown	Pink	Yellow		Bi-tone	
Gold	Purple	White		Blend	

5. **Best Specimen of Show** – A Best Specimen AIS Rosette and Certificate may be awarded to the best single stalk entered in the Horticulture and Youth Horticulture Divisions. (Single Blossoms, Seedlings, Bulbous, English Boxes and Collection entries are not eligible for this award).
6. **Runner-up to Best Specimen of Show** – An AIS Rosette may be awarded to the second best single stalk entered in the Horticulture Division. (Seedlings, Bulbous, English Boxes and Collection entries are not eligible for this award).
7. **Section Medal Certificates** – An AIS Section Medal Certificate may be awarded to the exhibitor with the most blue ribbons in any Horticulture section with at least 3 exhibitors and 5 cultivars. Single Blossom entries are not eligible for medals.
8. **Horticultural Sweepstakes** –An AIS Silver Medal and Certificate may be awarded to the exhibitor with the most blue ribbons in the Horticulture division, provided the Division had at least 5 exhibitors and 20 cultivars.
9. **Horticultural Sweepstakes Runner-Up** – An AIS Bronze Medal and Certificate may be awarded to the exhibitor with the second most blue ribbons in the Horticulture division, provided the Division had at least 5 exhibitors and 20 cultivars.
10. In addition to the AIS awards listed, the Iris Society of Austin may also award a “keeper trophy” to the winners of Best of Section, Best of Texas, Best of Color, Best Specimen of Show and Runner Up.

DIVISION II — SEEDLINGS

RULES

1. Entries in this division consist of any unIntroduced iris of any type, and it is not required that they have a registered name. Seedlings may be entered under either a seedling number or a registered name
2. Any exhibitor may enter a seedling owned or originated by another person, but the entry card must contain the name of the owner or originator of the clone.
3. Entries in this division will use the same Sections as in DIVISION I above.

AWARDS

Exhibition Certificate – An Exhibition Certificate and AIS Rosette may be awarded to any seedling the judges determine Best Seedling of the Show; or any seedling receiving five (5) or more votes from fully accredited American Iris Society judges attending the show.

NOTE – Exhibition judging of seedlings is distinctly different from judging of introduced varieties. Grooming and condition of the iris seedling (which are skills shown by the exhibitor) are not considered. The quality of the iris stalk and flower, and their distinctiveness are among the criteria used by judges in this division.

DIVISION III — YOUTH HORTICULTURE

RULES

1. Any exhibitor under 19 years of age may enter exhibits in either the Youth Horticulture Division or the Adult Horticulture Division, but not both in the same show.
2. All other rules and Sections are the same as in Division I above.

AWARDS

Youth exhibitors will be eligible for any show awards (*i.e.* Best Specimen of Show) in addition to those specifically designated as Youth Awards. AIS Youth Silver and Bronze medals may be awarded if the Division has at least 2 exhibitors and 10 cultivars.

DIVISION IV— ARTISTIC DESIGN

RULES

1. An exhibitor may enter only one exhibit per class but may enter as many classes as desired.
2. The design must be created by the exhibitor.
3. Iris must be the dominant flower in all designs, but other flowers may also be used. Neither the irises nor other plant material are required to have been grown by the exhibitor.
4. Other flowers, foliage, dried and treated plant material, accessories, bases, and weathered wood is permitted in all classes. Fresh plant material may not be treated. No artificial flowers or foliage is permitted. The American flag or any other country's flag may not be used.
5. The use of any parts of plants on the state conservation list is strictly prohibited.
6. Designs in all classes should interpret the general show theme.
7. Each design will be allotted area on a table up to 30" wide and 24" deep, and designs should not be more than 40" tall.
8. If desired, exhibitors may provide their own backdrop or niche. While these are not required, the presence or absence of a backdrop or niche may impact the judges' scoring of the overall presentation of the design.
9. A 3" x 5" card may be included with the exhibit to explain the designer's interpretation of the theme
10. Judging will be by the scale of points in the AIS Handbook.

Conformance to Schedule Requirements	10 points
Design Principles	35 points
Color Use	20 points
Creative Expression	20 points
<u>Distinctiveness</u>	<u>15 points</u>
Total	100 points
11. Artistic Designs are placed by the exhibitor. No person shall touch, feel, adjust, or move any part of a design except the exhibitor.

12. **Reservations are required** for the Artistic Design Division
Please contact Tracey Rogers at 512-789-2015 by April 6.

CLASSES

Class 1: "Celebrating Zilker Novice – open only to exhibitors who have never won a blue ribbon in a design Class at this show

Class 2: "The Children's Garden" Small Design – no more than 15 inches in height

Class 3: "Taniguchi Japanese Garden" Tray – arrangement of plant material and dining components on a tray

Class 4: "Hartman Prehistoric Garden" Designer's Choice

AWARDS

1. **Ribbons** – One first place ribbon (blue), one second place (red), and one third place (white) may be awarded in each class. As many honorable mention ribbons (pink) as quality merits may be awarded.
2. **Best Design of Show** – An AIS Rosette and a certificate may be awarded for the best design as chosen by the judges from all entries in all classes.
3. **Artistic Sweepstakes** – An AIS Rosette and a certificate may be awarded to the exhibitor with the most blue ribbons earned in the Artistic Design Division.

DIVISION V – EDUCATIONAL EXHIBITS

RULES

1. Each entry constitutes a separate class.
2. Any topic pertaining to iris, iris culture, or hybridizing is acceptable; and, the exhibit should include some tie in with the general show theme.
3. Up to 6 linear feet of standard tabletop will be assigned to each exhibit. Display should extend no more than 4 feet above the tabletop.
4. **Reservations are required** for the Educational Division.
Please contact Tracey Rogers at 512-789-2015 by April 6.

AWARDS

- 1. Ribbons** – A first place ribbon (blue), a second place (red), a third place (white), or an honorable mention (pink) may be awarded to any exhibit if merited.
- 2. Rosette** – An AIS Special Award Rosette may be awarded to any exhibit of unusual merit.
- 3. Bronze Medal** – An AIS Bronze Medal may be awarded to any exhibit of outstanding merit.

DIVISION VI – COMMERCIAL EXHIBITS

The same rules as stated above for Educational Exhibits will apply in this division. The Show Committee will determine if an exhibitor is to be classified as a Commercial Exhibit.

No awards are given in this Division.

DIVISION VII – PHOTOGRAPHY

RULES

1. Each entry constitutes a separate class.
2. An exhibitor may enter only one exhibit per section, but may enter as many sections as desired.
3. Exhibits must have been photographed, matted, transported and entered, in person, by the individual whose name appears on the entry tag.
4. All exhibits must be color photographs, and 8"x10" in size.
5. Photos must be displayed in a mat provided by the exhibitor, with outer dimensions of 11"x14". The mat may be any color, but should enhance the photograph. Therefore, the exhibitor's choice of mat color may impact the judges' scores.
6. Picture frames and glass are not permitted.
7. Iris should be the dominant subject of the photograph, but the irises are NOT required to have been grown or owned by the exhibitors.

8. Modifications may be made to the image in the photo editing mode of cameras, apps (Pro Camera), or programs (Photoshop), as long as the modification is applied to the whole image and not just part of the image.
9. Adding graphics, borders, text, clip art, computer generated images, and images from other photographs is NOT permitted.
10. When awarding ribbons, judges will consider equally each of the following: Overall Impact, Composition, and Technique.
11. The photo must have been taken within the last two years and may not have been entered in any ISA Show in the past.

SECTIONS

- A Single Bloom - A single iris bloom or part of an iris bloom
- B Multiple Blooms - More than one iris bloom, either on a single stalk or multiple stalks
- C Creatures in a Garden – Insects/animals with an iris or irises
- D Non-Bloom - Any part of an iris other than the bloom

AWARDS

1. **Ribbons** – A first place ribbon (blue), a second place (red), a third place (white), or an honorable mention (pink) may be awarded to any exhibit if merited.
2. **Best of Section** – An AIS Rosette may be awarded to the best entry in any Section.
3. **Best Photograph of Show** –An AIS Rosette and an ISA certificate may be awarded for the single best photo of the show, as chosen by the judges from all entries in all classes.

SAMPLE HORTICULTURE ENTRY TAG

Put "T" here if your variety was hybridized in Texas

Registered name of your iris variety

Your exhibitor number
Put "T" here if your variety was hybridized in Texas

Write year of show on back of card

T	Division <u>I</u> Section <u>R</u> Group/Class <u>3</u>		
Variety	Cajun Sunrise		
Exhibitor Address	Bud Flowers 123 Falls Court Austin TX 78701		
1st Award	2nd Award	3rd Award	Honorable Mention
1 Award	2nd AWE	3rd Award	Honorable Mention
Entry No. _____	24- Section R Group/ 3		
Variety	Cajun Sunrise		
Exhibitor Address	Bud Flowers 123 Falls Court Austin TX 78701		

"I" for Horticulture Division
"R" for Other Iris Section "3" for the Group/class if there is a group

Your name & address as exhibitor & grower

To save time, use a return address label

Repeat information from top of card on bottom portion

SAMPLE ARTISTIC ENTRY TAG

Name of artistic class

Your exhibitor number

Write year of show on back of card

	Division <u>IV</u> Section <u>--</u> Group/ ... Class <u>1</u>		
Variety _____	Novice _____		
Exhibitor Address	Bud Flowers 123 Falls Court Austin TX 78701		
1st Award	2nd Award	3rd Award	Honorable Mention
1st Award	2nd Award	3rd Award	Honorable Mention
Entry No. _____	24 Section _____ Group/Class		
Variety	Novice		
Exhibitor Address	Bud Flowers 123 Falls Court Austin TX 78701		

"IV" for Artistic Division

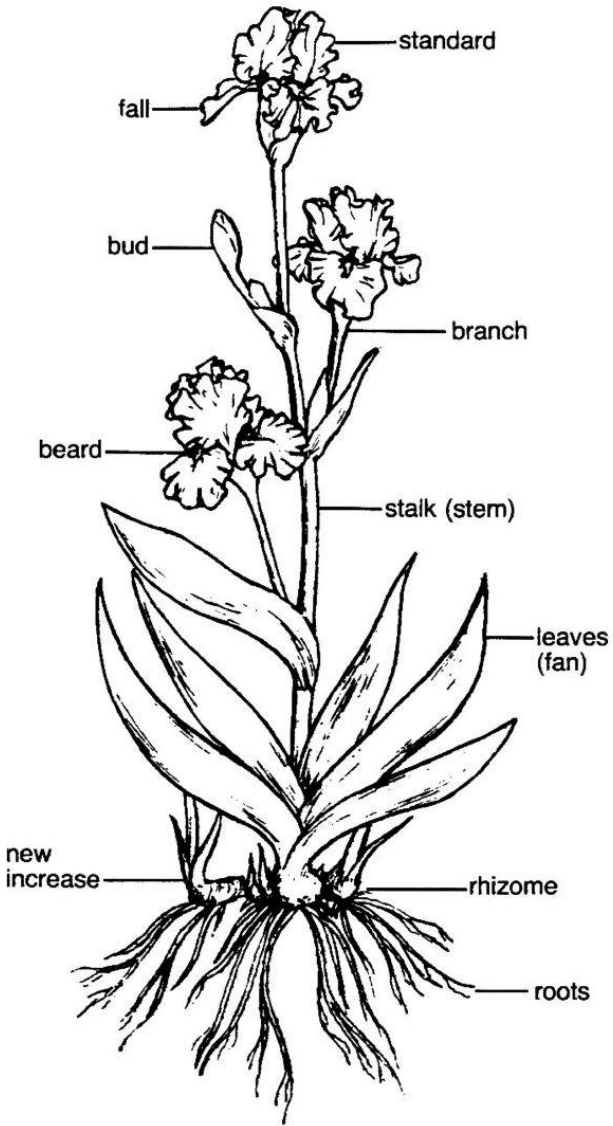
No Section for Artistic
"1" for Novice Class

To save time, use a return address label

Repeat information from above and use another label

PAST BEST OF SHOW WINNERS

YEAR	CULTIVAR NAME	EXHIBITED BY
2023	Haunted Heart	Donna Little
2019	High Point	Ellen Singleton
2017	Bayou Tiger	Jaime Hadley
2016	Baditude	Dara E Smith
2015	Al's Gal	Ellen Singleton
2014	Silverado	Debbie Hood
2013	Different Take	Don & Pat Freeman
2012	Thornbird	Tony & Tiffany Sheridan
2011	Thornbird	Patricia Colacino
2010	Laura Louise	Don & Pat Freeman
2009	Creole Rhapsody	Nelda Moore
2007	Cordoba	Carolyn Gifford
2006	Acadian Miss	Marney Abel
2005	Cajun Sunrise	Lindsey Schell
2004	Cordoba	Jim Landers
2003	Thornbird	Don & Pat Freeman
2002	Cinnamon Girl	Sonja & Charles Hensley
2001	Jesse's Song	Rita & Cliff Snyder
2000	Lotta Plicata	Jim Landers
1999	Ozone Alert	Roy & Connie Rutledge



THE AMERICAN IRIS SOCIETY

The Iris Society of Austin